

THIS LIFE GROUP CYCLE WILL BEGIN  
ON THE WEEK OF FEBRUARY 1ST AND END  
ON THE WEEK OF APRIL 26TH.



[www.pathwayvineyard.com](http://www.pathwayvineyard.com)  
PO Box 1610 Lewiston, ME 04241-1610  
Tel. 207.784.9500  
Fax. 207.777.3076



W I N T E R  
L I F E  
G R O U P S



Dear friends,

I am so excited to present to you the Life Groups for this coming trimester! Whether you're a stay-at-home mom, an office worker, a teenager, a seasoned saint, or a curious newcomer to our church, there's a Life Group for you.

Here at Pathway, we strongly value Life Groups. I don't know if you've noticed, but Pathway Vineyard has a large community of members and attenders, and we're all spread out across Central Maine! Being part of a Life Group not only lets us experience God at a very personal level, it also helps us build relationships with people we might not bump into on a Sunday morning.

Life Groups provide a great opportunity to make friends, experience God, ask questions, get prayer, worship, eat good food, and, perhaps most simply, to share your life with others.

If the group you are interested in attending does not offer childcare, feel free to contact Michele Davidson, our Children's Pastor. She maintains a list of trusted childcare providers who you can call, interview, and potentially hire to watch your kids!

Blessings - and I'll see you on the journey, maybe in a Life Group!

Allen Austin

A handwritten signature in black ink, appearing to read "A. Austin".

Senior Pastor

### 301: LEARNING TO LEAD AT PATHWAY

LED BY JOLENE MCCLINTICK 729-8202  
HOSTED BY MATT & ERIN ENGSTROM

In this life group we explore what it means to help lead & pastor Pathway Vineyard. How does your gifting & life experience fit into the divine assignment our church has been called to? Plus, we will equip you to lead in life group settings & various areas of ministry if the opportunity arises. Membership & Vineyard 201 are a pre-requisite.



6:30PM  
19 RIVERVIEW DR  
BRUNSWICK

Group Type: General  
Childcare: None  
Curriculum: Provided  
jommcclintick@comcast.net

### LOVE TALK

LED BY KIM & VINCE BROWN 841-4399  
HOSTED BY THE BROWNS

Communication is a key life skill in any relationship. In this life group we will explore six different communication tools that will help your relationship become strong and long lasting.



6PM  
363 FOSTERS PT RD  
BRUNSWICK

Group Type: Marriage/Couples  
Childcare: None  
Curriculum: DVD Series  
kimblee1969@gmail.com

### AEROBIC/DANCE FITNESS

MEANN EMANO 577-3020 & MICHELLE ESCOBAR 632-6652  
PATHWAY LEWISTON CAMPUS

Each week we will look at God's word as we focus on developing a deeper relationship with Jesus. Our goal is to be healthy people, spiritually and physically. We will share verses that help us stay focused during the week, encourage one another, and have fun exercising through dance.



6:30PM  
9 FOSS RD  
LEWISTON

Group Type: Women  
Childcare: None  
Curriculum: None  
meanne.emano@gmail.com

# PATHWAY PRAYER GROUPS

## LEWISTON

Wednesday - 6:15PM  
in the Education Center, 9 Foss Road  
Sunday - 7:30AM and 10AM  
Backstage in the Auditorium 12 Foss Road

## BRUNSWICK

Wednesday - 6:30PM  
Downstairs, 94 Pleasant Street  
Sunday - 8AM and 10AM  
Downstairs, 94 Pleasant Street

## SOAKING PRAYER SESSIONS

If you would like to receive a time of extended prayer for areas in your life that you'd like God to help with with, please call the office for an appointment. 207-784-9500

## ACTIVATE

Activate is our recurring strategic prayer meeting. Watch the calendar for upcoming dates and times!

## LEARN TO PRAY LIKE JESUS

This class is open to ANYONE interested in learning more about how to pray with others and is the first step for those who would like to volunteer with a Prayer Ministry Team here at Pathway Vineyard. To register, contact Amy Bergen at amy.bergen@pathwayvineyard.com or call 207-784-9500. Every 3rd Thursday of the month at 6:30. We meet in the Fireside Lounge and childcare is available if you sign up!

# RECURRING EVENTS

## YOUTH GROUP

Join us weekly for relevant teaching, awesome worship, games, and more!

Lewiston: Wednesdays from 6:30-8:30PM in the MPR  
Brunswick: Tuesdays from 6-7:30PM

## CELEBRATE RECOVERY

For all of life's hurts, habits, and hang-ups.

Lewiston: Thursdays at 6PM, Pathway Cafe  
Brunswick: Thursdays at 6PM  
Augusta: Thursdays at 6PM

## COMMUNITY MEAL

This free meal is open to any and everyone. Lewiston Campus's food pantry is also open during this time.

Lewiston: Every Friday 11:30A-1P  
Brunswick: Every last Friday of the month, 5P-6:30P

## KIDS NIGHT OUT

Kids in grades K-5, come join us for a free movie night with snacks and games!

Lewiston: Every fourth Friday of the month, 5:30P-8P

## SEASONED SAINTS

If you're 65-ish or older, join us on the third Wednesday of every month from 10A-12P for brunch, live worship, games, and a relevant message!

## HOLY SPIRIT

LED BY CAROL USTACH 577-9817 & JERRY LABEL  
HOSTED BY JIM & DONNA FOSSETT



Allen recently completed a series titled "Power Source." We will look at Scriptures about the Holy Spirit to build on the foundation Allen laid. The Holy Spirit is our Counselor, Comforter, Spirit of Truth, the One who helps us to see what the Father is doing, & the One who invites us to participate with Him. Join us as we delve deeper into the Word to discover the beauty found in our precious Holy Spirit.

6PM  
90 DUNN ROAD  
POLAND

Group Type: General  
Childcare: None  
Curriculum: Bible  
custach@rsu16.org

## GOD'S GREAT OUTDOORS

LED BY KEVIN ROUILLARD 207-240-8315 & JIM BEAR  
HOSTED BY CENTRAL MAINE ARCHERY



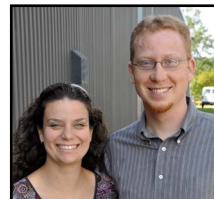
Come join us as we explore God's great outdoors. We will be spending time as a group doing various archery activities. There is no skill level required. From beginner to seasoned outdoorsmen we all have something to contribute. Build new relationships and share life's journey with each other, all the while centering it on Christ!

6PM  
13 WASHINGTON ST  
AUBURN

Group Type: Men  
Childcare: None  
Curriculum: Provided  
cmrmaine1@gmail.com | jdbearmail@gmail.com

## THE 12 APOSTLES: REGULAR GUYS

LED BY SETH & EMILY VINCENT 207-783-0819  
PATHWAY LEWISTON CAMPUS



In this group we will search the Bible to see what the Apostles did before Jesus came, what life was like walking with Jesus, and what happened to them after He resurrected. This group will encourage us as we see that they were regular guys like us.

6:30PM  
9 FOSS RD  
LEWISTON

Group Type: General  
Childcare: None  
Curriculum: Bible  
seth.vincent@gordon.edu

## WINTER FITNESS

LED BY DARRELL MCGUIRE  
PATHWAY LEWISTON CAMPUS

It can be hard to stay active during the winter months, but with the encouragement and accountability of others, you can head into spring on the right foot. Not only do we exercise during our time together, we also seek to improve our Spiritual Fitness through fellowship, worship, prayer, and the Word.



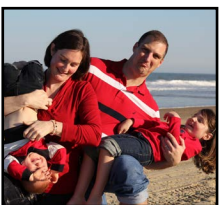
6:30PM  
9 FOSS RD  
LEWISTON

Group Type: General  
Childcare: None  
Curriculum: Bible  
darrellmcguire@yahoo.com

## THE DANIEL PLAN

LED BY ERICA SKOLNEKOVICH 841-6255  
PATHWAY BRUNSWICK CAMPUS

Make 2015 your most energy filled & focused year by tapping into a healthy lifestyle. In this group we will laugh, have open discussion, share recipes, talk about how food can help and hurt us, and see what the Bible has to say about taking care of ourselves. Bring water and wear comfortable clothing and sneakers to encounter Faith, Food, Fitness, Focus, and Friends.



6:30PM  
94 PLEASANT ST  
BRUNSWICK

Group Type: General  
Childcare: Yes  
Curriculum: DVD Series  
erica@skolnekovich.com

# STAFF, CONT.

MIKE LYLE, Augusta Site Pastor  
mike.lyle@pathwayvineyard.com

KYLE GABRI, Brunswick Site Pastor  
kyle.gabri@pathwayvineyard.com

MICHELE DAVIDSON, Children's Pastor  
michele.davidson@pathwayvineyard.com

LORI MCRAE, Dir. of Recovery & Community Relations  
lori.mcrae@pathwayvineyard.com

THOMAS MCKELICK, Saturday Night Site Pastor  
thomas.mckellick@pathwayvineyard.com

BRIANNA DAVIDSON, Administrative Assistant  
brianna.davidson@pathwayvineyard.com

ROGER PELLETIER, Facilities  
leo.hewes@pathwayvineyard.com

LINDA USTACH, Bookkeeper  
accounts@pathwayvineyard.com

JENNA STEPP, HLI Director  
jenna.stepp@pathwayvineyard.com

MARY MCKELICK, HLI Staff  
mary.mckellick@pathwayvineyard.com

AMY BERGEN, MARKETING DIRECTOR  
amy.bergen@pathwayvineyard.com

JEREMY SKELTON, YOUTH PASTOR  
jeremy.skelton@pathwayvineyard.com

## 201: FOUNDATIONS

LED BY THOMAS MCKELICK 346-0091  
PATHWAY LEWISTON CAMPUS



This life group will explore the foundations of the Christian Faith. Topics will include who is Jesus and how is the Bible important to our daily lives with Jesus. We will also take several weeks and talk about the five core Vineyard values. This is a great next step after membership in your journey here at Pathway. Membership a pre-requisite.

6:30PM  
9 FOSS RD  
LEWISTON

Group Type: General  
Childcare: Yes  
Curriculum: Provided  
thomas.mckellick@pathwayvineyard.com

## PATHWAY VINEYARD OFFICES

Open Tuesday-Friday, 8AM-5PM  
Mail. PO Box 1610 Lewiston, ME 04241-1610  
Loc. 9 Foss Road Lewiston, ME 04240  
Tel. 207-784-9500 Fax. 207-777-3076  
www.pathwayvineyard.com

## PATHWAY CAMPUSES

**AUGUSTA**  
5 Glenridge Drive  
Sunday Service: 10AM

**SATURDAY NIGHT SITE**  
Pathway Cafe  
9 Foss Road  
Saturday Service at 5PM

**BRUNSWICK**  
94 Pleasant Street  
Sunday Services: 8AM,  
9:30AM, & 11:10AM

**LEWISTON**  
12 Foss Road, Lewiston  
Sunday Services: 8:30,  
10:30AM

## STAFF

ALLEN AUSTIN, Senior Pastor  
*allen.austin@pathwayvineyard.com*

JANET STROUT, Staff Pastor  
*janet.strout@pathwayvineyard.com*

BOB NAILOR, Administrative Pastor  
*bob.nailor@pathwayvineyard.com*

PAULINE POWELL, Ministry Dev. & Counseling  
*pauline.powell@pathwayvineyard.com*

MIKE WARD, Worship Director  
*mike.ward@pathwayvineyard.com*

## BEAUTIFUL OUTLAW

LED BY TAMMY COUTURIER 520-0855  
HOSTED BY TIM & DEB POMERLEAU



Breaking Jesus out of the typical stereotypes, Beautiful Outlaw welcomes us into the rich emotional life of Christ showing how we can experience the actual personality of Jesus in our daily lives in ways that will deepen our faith.

6:30PM  
14 PAULINE AVE  
LEWISTON

Group Type: General  
Childcare: None  
Curriculum: Book \$12  
faithfilled14@gmail.com

## BOUNDARIES

LED BY PAULINE POWELL 740-0388  
PATHWAY LEWISTON CAMPUS



Boundaries define who we are & who we aren't, they help us to distinguish God's will from our own, and they give us renewed awe for our Creator. Join us as we learn and grow in defining physical, mental, and emotional boundaries and relationships.

6:30PM  
9 FOSS RD  
LEWISTON

Group Type: General  
Childcare: Yes  
Curriculum: Book \$8  
pauline.powell@pathwayvineyard.com

## 301: LEARNING TO LEAD AT PATHWAY

LED BY BOB & LYNDA NAILOR 577-5441  
 PATHWAY LEWISTON CAMPUS

In this life group we explore what it means to help lead & pastor Pathway Vineyard. How does your gifting & life experience fit into the divine assignment our church has been called to? Plus, we will equip you to lead in life group settings & various areas of ministry if the opportunity arises. Membership & Vineyard 201 are a pre-requisite.



Group Type: General  
 Childcare: Yes  
 Curriculum: Provided  
 bob.nailor@pathwayvineyard.com

6:30PM  
 9 FOSS RD  
 LEWISTON

## THE POWER OF UGLY

LED BY JAY LEVESQUE 807-5524  
 PATHWAY BRUNSWICK CAMPUS

Do we disengage from “CHURCH” because we put unrealistic expectations on church itself or ourselves? Come learn how to have a greater “church” life by discussing what the reality of following Jesus in our lives really looks like.



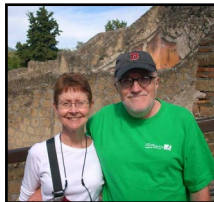
Group Type: General  
 Childcare: None  
 Curriculum: DVD Series  
 polarnavs@gmail.com

6:30PM  
 94 PLEASANT ST  
 BRUNSWICK

## WHO MOVED MY CHEESE?

LED BY JOHN & LINDA USTACH 786-3701  
 HOSTED BY THE USTACHES

Since change happens in our lives, we will look at what matters most: the attitude we have about it. We will take the fear and anxiety out of managing the future and explore a simple way to successfully deal with the changing times, providing us with a method for moving ahead with our work and lives safely and effectively.



Group Type: General  
 Childcare: None  
 Curriculum: Book  
 lustach@roadrunner.com

7PM  
 45 HOGAN ROAD  
 LEWISTON

### ORDERING YOUR PRIVATE WORLD

LED BY JOE & BARB GABRI 576-9410  
HOSTED BY THE GABRIS

This life group is about equipping us to live life from the inside out- causing us to inventory why we do what we do... programs, meetings, responsibilities. It is designed to help us integrate spiritual disciplines into our daily walk with Christ. It will help us learn to be quiet, order our thoughts, calendars, & environments as a result of putting the kingdom of God first.



10:30AM  
632 MAIN ST  
LEWISTON

Group Type: General  
Childcare: None  
Curriculum: Book \$13  
barbgabri@aol.com

### RAW HOPE

LED BY JENNA STEPP 312-9555  
PATHWAY LEWISTON CAMPUS

During the life group we will make a place for women to take intentional steps away from fear, anxiety and hurry. Come be refreshed and refocused.



6:30PM  
9 FOSS RD  
LEWISTON

Group Type: Women  
Childcare: Yes  
Curriculum: Bible  
jmsdove@gmail.com

### MAKING FRIENDS & QUILTS

LED BY HEIDI CASAVANT 576-3094  
PATHWAY LEWISTON CAMPUS

Learn to quilt or enhance your quilting skills. Join the fun!  
Beginners will learn the basics by making a log cabin quilt. Sewing machine is required.



9AM  
9 FOSS RD  
LEWISTON

Group Type: General  
Childcare: None  
Curriculum: None  
heidicasavant@yahoo.com

### A CASE FOR CHRIST

LED BY KYLE GABRI 576-8980  
HOSTED BY BARB & PAT ROCHE

Is there credible evidence that Jesus of Nazareth really is the Son of God? Skeptics dismiss the Jesus of the Gospels by claiming there is no evidence in the case for Christ. This group invited you to investigate the truth about Jesus Christ leading to the facts that guided Strobel from atheism to faith in Christ.



6:30PM  
222 THOMAS PT RD  
BRUNSWICK

Group Type: General  
Childcare: None  
Curriculum: Book \$10  
kyle.gabri@pathwayvineyard.com

### MANHOOD RESTORED

LED BY TOM ROANE 720-0904  
HOSTED BY THE ROANES

Manhood will always be in crisis until Jesus returns. But in Christ, men can be restored to the undefiled image of God. This Bible study explores the current state of masculinity, Jesus as the prototype man, and how the gospel can re-create us into what God intended us to be.



6:30PM  
21 KAELYN DR  
SABATTUS

Group Type: Men  
Childcare: None  
Curriculum: DVD Series  
roane\_thomas@yahoo.com

## DISCERNING THE VOICE OF GOD

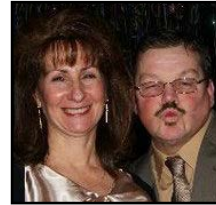
LED BY PAM & BOB EDSON 657-5987  
HOSTED BY THE EDSONS

The Father so passionately loves you and He sent Jesus to die in your place. He desires a personal relationship in which He speaks directly to you. Join us as we explore the practical ways we can learn to hear from God and know the Holy Spirit more closely.



7PM  
13 FAIRVIEW AVE  
GRAY

Group Type: General  
Childcare: None  
Curriculum: DVD Series  
pedson@graymaine.org



6:30PM  
34 LOUISE AVE  
LEWISTON

LED BY GEORGE & MARY HOLMES 576-1221  
HOSTED BY THE MORGANS

Do we disengage from "CHURCH" because we put unrealistic expectations on church itself or ourselves? Come learn how to have a greater "church" life by discussing what the reality of following Jesus in our lives really looks like.

Group Type: General  
Childcare: None  
Curriculum: DVD Series  
orbub42@yahoo.com

## ROMANS: A BIBLE STUDY

LED BY BRIANNA DAVIDSON 576-6622 & KATRINA WEBSTER  
HOSTED BY KATRINA WEBSTER



6:30PM  
21 PROSPECT AVE  
AUBURN

Join us as we explore Paul's letter to the Roman church. The book of Romans is a great way to see how Jesus offers grace in our Christian journey and that Jesus is for us and not against us.

Group Type: General  
Childcare: None  
Curriculum: Bible  
brianna.davidson@pathwayvineyard.com

## BREATHE: MAKING ROOM FOR SABBATH

LED BY MARY ELLEN SAWYER 795-0806 & MARY JO JOHNSON  
LAKE AUBURN TOWNE HOUSE COMMUNITY RM

One of the many challenges among women in our culture is taking time to stop and just breathe. By neglecting time for rest, we limit our Christlikeness and miss out on some of God's greatest gifts. It is time for us to breathe and build margin into our lives for God. Sabbath was intended as a gift, and it is still a gift to us today. If you are weary, worn out, and exhausted, the concept of Sabbath will change your life.



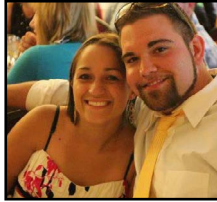
6PM  
74 LAKE ST  
AUBURN

Group Type: Women  
Childcare: None  
Curriculum: DVD Series  
me.sawyer@yahoo.com

## FINANCIAL PEACE

LED BY JON & BETHANY VIOLETTE 754-9721  
HOSTED BY THE VIOLETTES

This could be the best financial investment you've ever made. FPU teaches financial responsibility and empowers people struggling with financial hardships by establishing a plan to take control of their finances. Vineyard families have eliminated around \$300,000 to date and tens of thousands saved for the future...you could be next!



7PM  
25 EVERGREEN LN  
SABATTUS

Group Type: General  
Childcare: None  
Curriculum: FPU Kit \$100  
bethany.violette@gmail.com

## TOPICAL BIBLE STUDY

LED BY ALLEN & DARLIN AUSTIN 784-9500  
HOSTED BY THE FONTAINES

Join us as we look at various Biblical topics and see how relevant they are to our daily lives. The Bible, although written long ago, still speaks to us today. This will be a great opportunity to learn more and discover God and his heart towards us.



6:30PM  
325 MINOT AVE  
AUBURN

Group Type: General  
Childcare: None  
Curriculum: Bible  
allen.austin@pathwayvineyard.com

## 201: FOUNDATIONS

LED BY MIKE LYLE 333-7004  
PATHWAY AUGUSTA CAMPUS



6:30PM  
5 GLENRIDGE DR  
AUGUSTA

This life group will explore the foundations of the Christian Faith. Topics will include who is Jesus and how the Bible is important to our daily lives with Jesus. We will also take several weeks and talk about the five core Vineyard values. This is a great next step after membership in your journey here at Pathway. Membership a pre-requisite.

Group Type: General  
Childcare: None  
Curriculum: Provided  
mike.lyle@pathwayvineyard.com

## GOD LOVES BROKEN PEOPLE

LED BY MICHELE DAVIDSON 576-7731 & JILL HEWES  
HOSTED BY THE DAVIDSONS



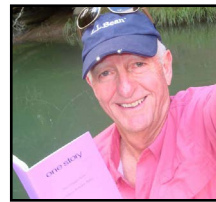
6:30PM  
242 FISHER FARM RD  
SABATTUS

When weary, wounded men and women find a way to open their bruised hearts and welcome Him into their personal darkness, they will find a love beyond anything they have ever known. They dare to believe in it...and through such trust, a new wholeness emerges from yesterday's broken pieces.

Group Type: Women  
Childcare: None  
Curriculum: Book  
michele.davidson@pathwayvineyard.com

## POLITICALLY INCORRECT

LED BY JOCK DYER 450-9473  
HOSTED BY THE LAMONTES



6:30PM  
7 BARROWS DR  
TOPSHAM

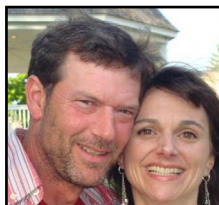
"Politically INCorrect" Christianity Message - Beyond Christmas, beyond salvation, beyond liturgy...an unhurried discussion format to seek group consensus on the Biblical application of discipleship.

Group Type: General  
Childcare: Yes  
Curriculum: Bible  
jock1943@yahoo.com

## I AM SECOND

LED BY JOE & LIZA RENO 522-1182  
HOSTED BY THE RENOS

Using a combination of stories about notable people who have had a radical, life changing encounter with Jesus, this series will show us the redemptive power of the gospel and how sharing your personal story can change someone else's life.



6:30PM  
288 HILL RD  
BATH

Group Type: General  
Childcare: None  
Curriculum: DVD Series  
jlreno521@gmail.com

## MADE TO CRAVE

LED BY HEIDI CASAVANT 576-3094  
HOSTED BY THE CASAVANTS



6PM  
27 ORCHARD CIRCLE  
LEWISTON

This group will help women understand how cravings for lasting spiritual satisfaction are often mistaken for cravings for food. According to Lysa, craving isn't a bad thing. But the challenge is to realize God created us to crave so we'd ultimately desire more of Him in our lives, not more food. Many of us have misplaced that craving, overindulging in physical pleasures instead of lasting spiritual satisfaction.

Group Type: Women  
Childcare: None  
Curriculum: Book \$10  
heidicasavant@yahoo.com

## TAKE IT TO THE LIMIT

LED BY WENDY MILES 252-0642  
HOSTED BY WENDY MILES

Our culture encourages us to live as if we have no limits - so we fill up our schedules and empty our bank accounts. We do as much as we can, spend as much as we can, and acquire as much as we can. Together we will explore God's answer to our self-destructive propensity to live as if we have no limits.



10AM  
11 MILES WAY  
FREEPORT

Group Type: General  
Childcare: None  
Curriculum: Book  
wendy@bobmilesinc.com

## GEARHEADS

LED BY BRAD JOHNSON 333-0364, TOEBE DAVIDSON, & LEO HEWES  
HOSTED BY BRAD JOHNSON



6PM  
144 RIVERSIDE DRIVE  
AUBURN

If you have a passion for the automotive field, love helping people, or just want to learn a little more about cars, Gearheads is here for you. We start with a Bible study and prayer, then move on to learning about the dynamics of automobiles, all while helping out people in need. Come join our group for fun and excitement.

Group Type: General  
Childcare: None  
Curriculum: None  
bradsprecisionauto@yahoo.com

## FINANCIAL PEACE

LED BY JOE & BARB GABRI 576-9410  
HOSTED BY THE GABRIS



6:30PM  
632 MAIN ST  
LEWISTON

This could be the best financial investment you've ever made. FPU teaches financial responsibility and empowers people struggling with financial hardships by establishing a plan to take control of their finances. Vineyard families have eliminated around \$300,000 to date and tens of thousands saved for the future...you could be next!

Group Type: General  
Childcare: Yes  
Curriculum: FPU Kit \$100  
barbgabri@aol.com